



PLANETARY PROTECTION  
**ORGANIC INVENTORY  
WORKSHOP**

FEBRUARY 27-28, 2024 - NASA HEADQUARTERS



## *Engineering Models:*

# Thruster Plume-Surface Interactions, Landing Site Alteration, Organic Footprint and Acceleration / Dispersion of Dust and Regolith

**William A. Hoey, PhD**

Technologist, Propulsion, Thermal and Materials Engineering Section  
Jet Propulsion Laboratory (JPL), California Institute of Technology

February 27 & 28, 2024



**Jet Propulsion Laboratory**  
California Institute of Technology





## [1] Background & Motivation

- Plume-Induced Contamination Effects
- Engineering Models for Engine Plume Effects

## [2] Empirical Models for Plume Effects

- Empirical Models for Bipropellant Plumes
- Characterization of Propellant Effects

## [3] Plume Effects in Icy Moon Environments

- Measuring Plume-Induced Contamination
- Plume Flowfield Modeling: Vehicle & Surface Interactions

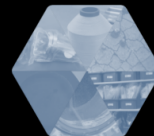
## [4] Toward Engineering Models for Lunar Landings

- Lunar Landings and Plume-Surface Interactions
- JPL Engineering Model Framework
- Simulation examples:
  - *Apollo Lunar Module Descent Engine (LMDE)*
  - *Apollo-Type Landings*

## [5] Conclusions: Existing Models and Applications

## [6] Discussing New Models: An 'Organic Footprint'

## [7] References & Acknowledgements



PLANETARY PROTECTION  
ORGANIC INVENTORY  
WORKSHOP

FEBRUARY 27-28, 2024 - NASA HEADQUARTERS

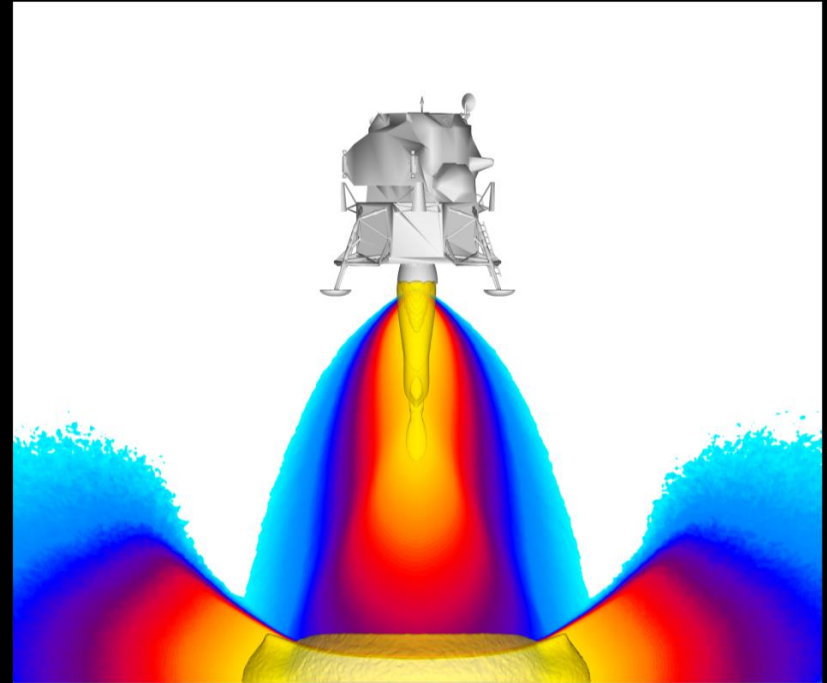
# [1] Background & Motivation

JPL and other NASA teams develop and apply engineering models to characterize plume effects on vehicles and environments.

- *JPL applications include spacecraft and stations in vacuum, and in icy moon and lunar landings.*
- *Chemical propulsion systems studied include mono- and bipropellants, LOX / LH2, etc.*

Physics-based models can be extended to study effects beyond the immediate landing environment and vehicle, i.e. the transport of organic contaminants to scientific sites far from a lander (e.g. PSRs).

This presentation will review existing JPL models and applications and discuss utility to studies of an ‘*organic footprint*’ of landers.



***JPL 353D results for rarefied gas dynamic dual engine plume flows in lunar landing, representative contours of pressure on an Apollo DE.*** Note shock formation between engines and surface, free expansion elsewhere. CFD-DSMC 1-way coupling.

Hoey, W., et al. (2022), "Spacecraft Engine Plumes in Near-Vacuum: Earth's Moon and Beyond," *RGD32*.

# Plume-Induced Contamination Effects

Harmful effects of molecular and particulate contamination include:

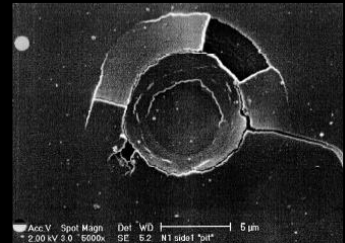
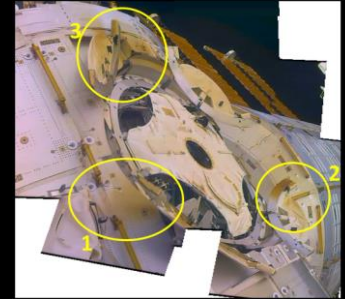
- Performance degradation –
  - *Thin film deposition may change the effective optical properties of a system; material deposited on a lens may obscure a viewed target.*
- Spurious instrument measurements –
  - *Contamination adds 'noise' or signal that does not originate from intended targets.*
- Material damage (e.g. chemical and mechanical erosion) –
  - *Propellant may be chemically incompatible with impinged-upon materials; dusts mobilized at high speed may erode exposed landing vehicle surfaces.*
- Landing and sampling site alteration –
  - *Plume constituents can condense onto and contaminate cold sampling sites (see e.g. Prem et al. 2020 for Earth's moon, Hoey et al. 2020 for Europa).*
  - *Plumes heat and erode landing sites – of particular concern for stationary landers.*

**Engineering models are needed to characterize these plume effects, and to inform spacecraft designs that mitigate harm.**

#### Slide References:

- Hoey, W., et al. (2022), "A Predictive Model of Lunar Gateway Molecular Contamination," *ISMSE*.  
Hoey, W., et al. (2022), "Spacecraft Engine Plumes in Near-Vacuum: Earth's Moon and Beyond," *RGD*.  
Soares, C. et al. (2015), "Improvements in Modeling Thruster Plume Erosion Damage to Spacecraft Surfaces," *ISMSE*.  
Soares, C. and Mikatariyan, R. (2002), "Thruster Plume Induced Contamination Measurements from the PIC and SPIFEX Flight Experiments," *SPIE*.

NASA Images:  
ISS Contamination Processes



# Engineering Models for Engine Plume Effects

<i>Mission</i>	ISS, Future Space Stations	Future Icy Moon Landers	Future Lunar Landers
<b>Mission Type</b>	Satellite / space station	Landed sampling platform	Landed sampling platforms, crewed vehicles, rovers
<b>Transport Vector</b>	Thruster plume firings from self and docking vehicles	Landing engine plume flows	Landing engine plume flows
<b>Ex. Vehicle Sensitivities</b>  <i>Just a few examples – there are many more engineering needs!</i>	Permanent depositions of molecular contaminants  Droplet impingement causing chemical / mechanical damage.	Alteration of icy samples with plume byproducts  Sampling system contamination	Landing site alteration Sampling site contamination Instrument / radiator / solar array interference from deposited particulate Vehicle mechanical damage by high-speed plume ejecta
<b>Ex. Engineering Models</b>	Empirical models for line-of-sight plume transport, deposition, and erosion.	Hybrid CFD-DSMC gas dynamic solvers.	Hybrid CFD-DSMC; empirical regolith viscous erosion models; particle adhesion and transport models...

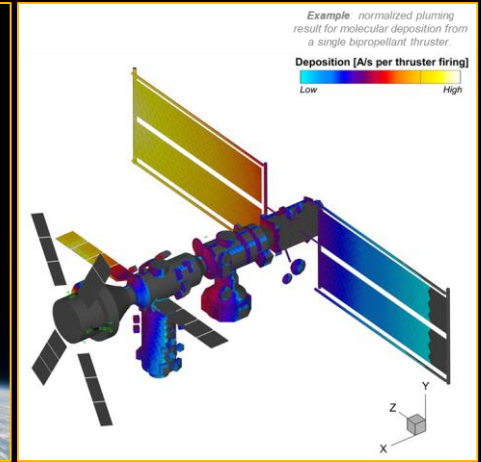
**Increasing model complexity!**

## [2] Empirical Models for Plume Effects

<b>Mission</b>	<b>ISS, Future Space Stations</b>
<b>Mission Type</b>	Satellite / space station
<b>Transport Vector</b>	<b>Thruster plume firings from self and docking vehicles</b>
<b>Ex. Vehicle Sensitivities</b>	<p>Permanent depositions of molecular contaminants</p> <p>Droplet impingement causing chemical / mechanical damage.</p>
<i>Just a few examples – there are many more engineering needs!</i>	
<b>Ex. Engineering Models</b>	Empirical models for line-of-sight plume transport, deposition, and erosion.



(Left) The *International Space Station (ISS)*. Image credit: NASA (2011)



(Right) Example of empirical model result for *Lunar Gateway* bipropellant pluming.

**ISS** experiences frequent pluming, as will future stations like **Lunar Gateway**, as multiple docking vehicles operate a range of chemical thrusters.

- Empirical models for permanent molecular deposition, droplet flux, and erosion have been developed (Soares et al. 2002, 2015), which JPL CC applies as above for Lunar Gateway (Hoey et al. 2022) and Europa Clipper (Anderson et al. 2024, pending).

# Empirical Models for Bipropellant Plumes

Empirical ISS bipropellant plume contamination models of Soares et al. (2002, 2015) report:

- Permanent molecular contaminant deposition.
- Droplet surface fluxes.
- Surface erosion.

Used to inform engineering design, e.g.:

- Feathering angles for rotatable ISS sensitive surfaces.
- Quantifying liquid droplet distribution, velocities in plumes.



Improvements were implemented to the initial erosion and particle flux models, informed by **flight hardware experiments** (SPIFEX and PIC) and **computational analysis**.

- PIC (*Plume Impingement Contamination*) flight experiment.
- SPIFEX (*Shuttle Plume impingement Flight Experiment*) – see also Stewart & Lumpkin (2017).
- Additional work was done to generate particle induced impact damage data with the SPHINX Smooth Particle Hydrodynamics code from Los Alamos National Laboratory (LANL).

Soares, C. et al. (2015), "Improvements in Modeling Thruster Plume Erosion Damage to Spacecraft Surfaces," *ISMSE*.

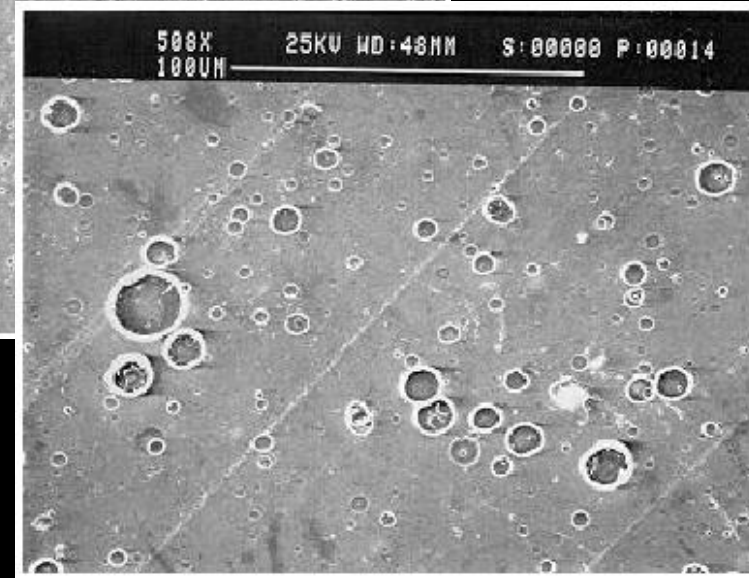
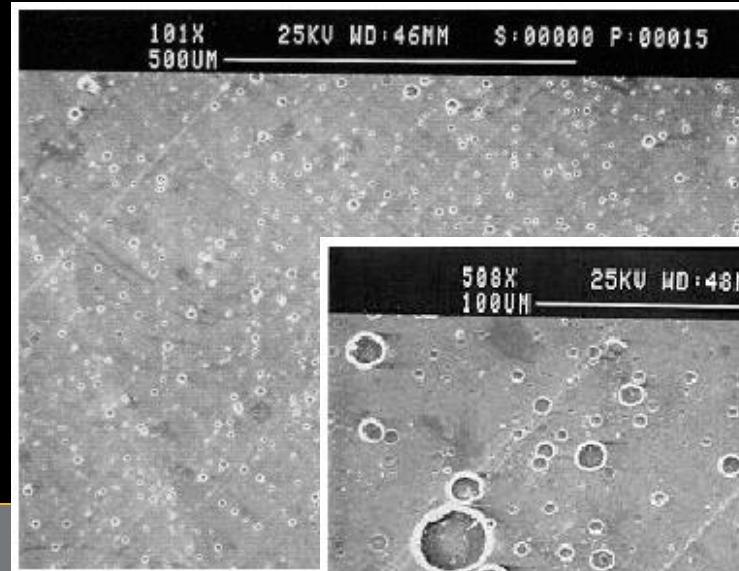
Soares, C. and Mikatarian, R. (2002), "Thruster Plume Induced Contamination Measurements from the PIC and SPIFEX Flight Experiments," *SPIE*.

# Characterization of Propellant Effects

Craters on Kapton tape are the result of impingement of **chemically-reactive liquid drops**.

- *Crater sizes: 1 – 40  $\mu\text{m}$  in diameter (not visible to the unaided eye)*
- *From analysis of SEM photos 2,200 impacts/ $\text{mm}^2$  observed on samples.*
- *Pitted area represents ~ 10% of the surface area of coupon.*

**Models informed by:** ISS on-orbit observations and vacuum chamber testing including recent material compatibility tests at White Sands, pending bipropellant plume tests at DLR.

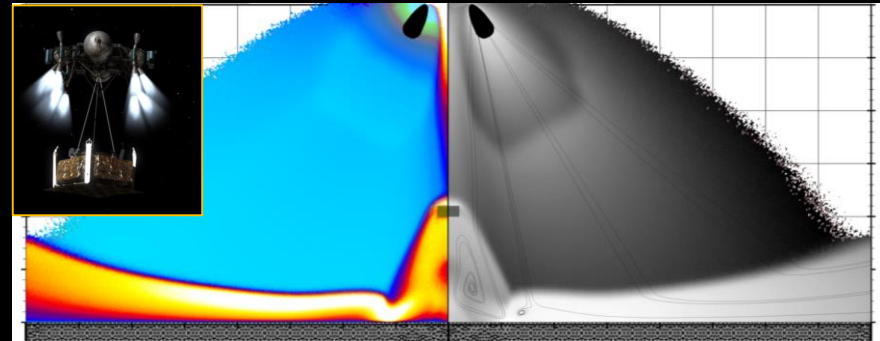


See Soares, C. and Mikatarian, R. (2002), "Thruster Plume Induced Contamination Measurements from the PIC and SPIFEX Flight Experiments," *Proc. SPIE*.



# [3] Plume Effects in Icy Moon Environments

<b>Mission</b>	<b>Future Icy Moon Landers</b>
<b>Mission Type</b>	Landed sampling platform
<b>Transport Vector</b>	<b>Landing engine plume flows</b>
<b>Ex. Vehicle Sensitivities</b>	Alteration of icy samples with plume byproducts  Sampling system contamination
<i>Just a few examples – there are many more engineering needs!</i>	
<b>Ex. Engineering Models</b>	Hybrid CFD-DSMC gas dynamic solvers.



*Europa Lander Sky Crane Descent Plume Simulation (Hoey et al. 2020, IEEE)*

In study of **icy moon mission concepts** including the proposed Europa Lander, JPL CC developed modeling capabilities for plume flows in airless environments.

Joint JPL-DLR monopropellant plume-induced contamination testing:

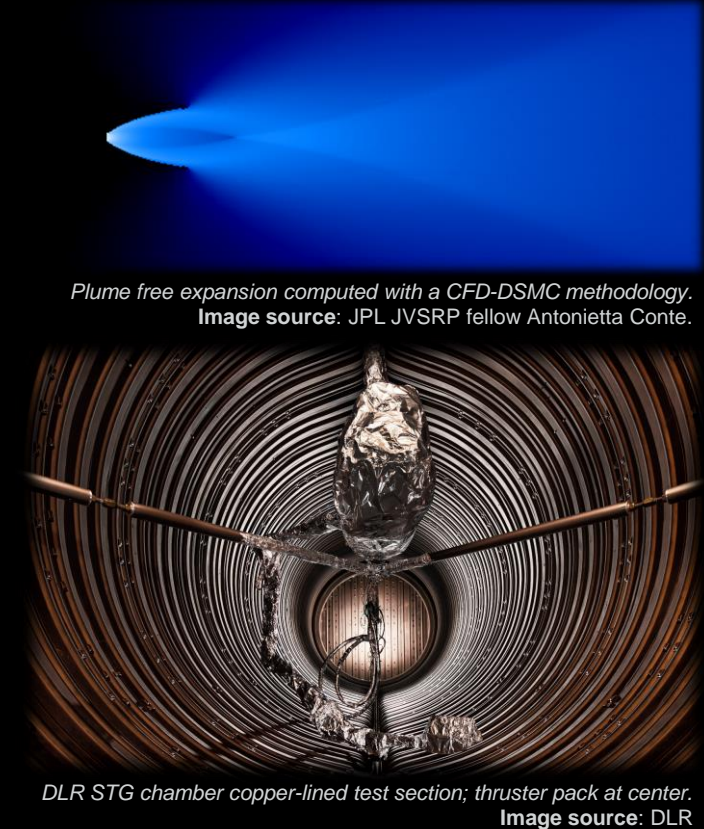
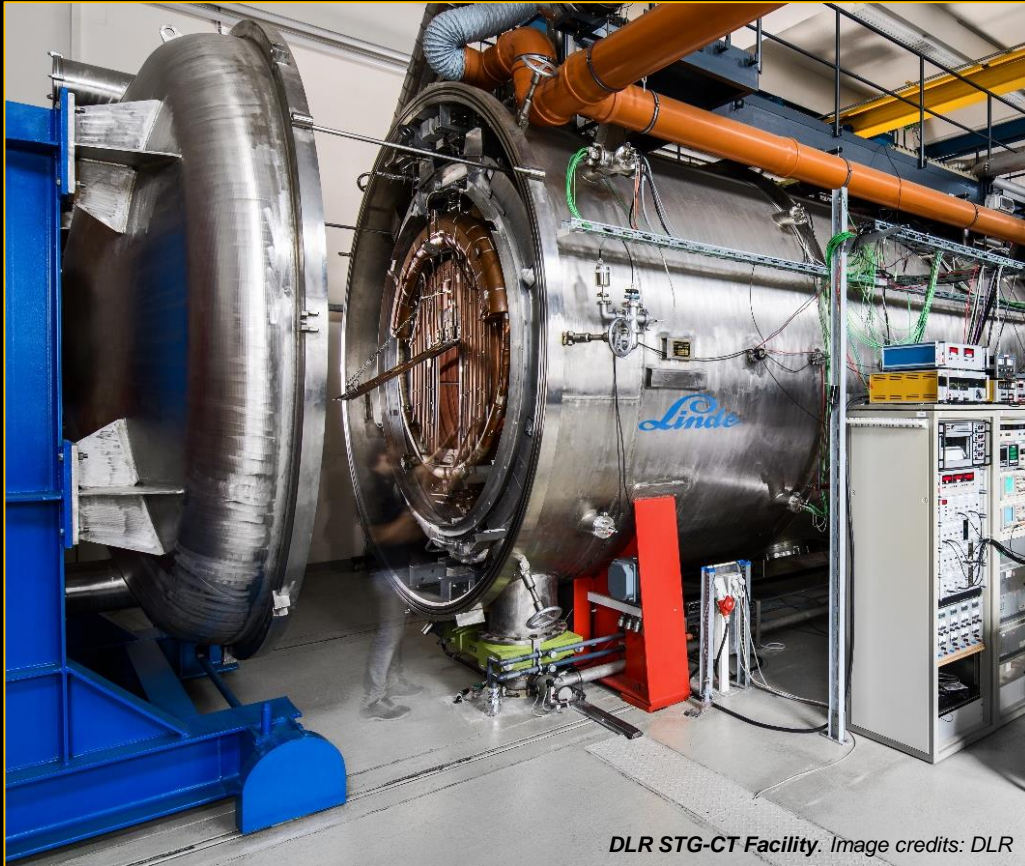
- *The Europa Lander Plume-Induced Contamination (EPIC) test program provided novel data about effects of the landing plume environment on materials and simulants (Grabe et al. 2022, ISMSE).*

Full-scale engine plume simulations with CFD/DSMC:

- *JPL investigations included Lam et al. 2019 (individual plumes), Hoey et al. 2020 (multiple plumes in Sky Crane configurations).*

Hoey, W., et al. (2022), "Spacecraft Engine Plumes in Near-Vacuum: Earth's Moon and Beyond," *RGD32*.  
Hoey, W., et al. (2020), "Europa Lander Engine Plume Interactions with the Surface and Vehicle," *IEEE*.

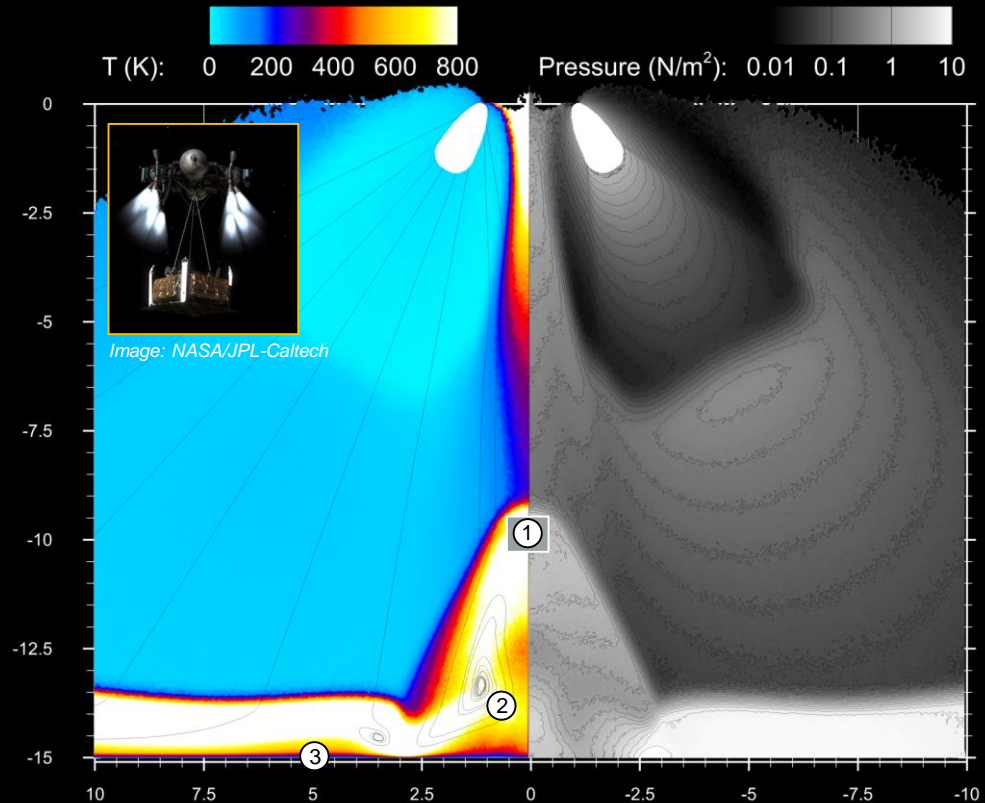
# Measuring Plume-Induced Contamination: Ongoing and Future Work



# Plume Flowfield Modeling: Vehicle & Surface Interactions

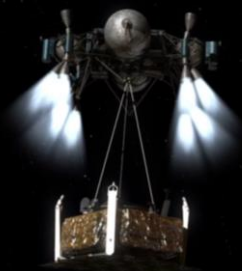
In this study of a proposed European landing with monopropellant thrusters, preliminary results showed that:

1. Engine plumes will interact, and can form **shocks over a lander and landing site**.
2. Streamlines show the formation of multiple **recirculation zones**.
3. Surface ammonia fluxes are above detection thresholds, and surface heat fluxes are higher than peak solar flux.
4. Engine plumes can support a rarefied **'atmosphere' of exhaust byproducts over a lander and landing site during descent**.

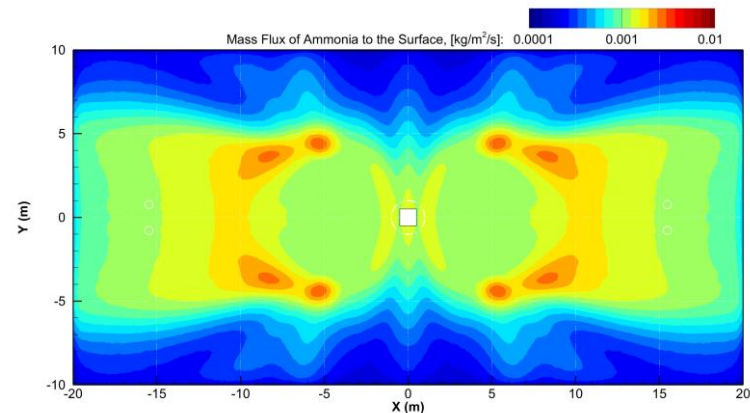
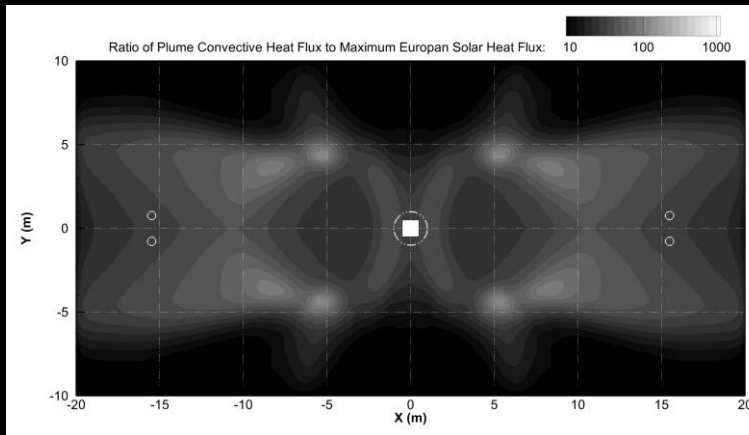


Lam, R., et al. (2019), "Numerical Study of Lander Engine Plume Impingement on the Surface of Europa," *JANNAF*. Pre-Decisional Information: For Planning and Discussion Purposes Only  
Hoey, W., et al. (2020), "Europa Lander Engine Plume Interactions with the Surface and Vehicle," *IEEE*.  
Hoey, W., et al. (2020), "Europa Lander Mission Concept Plume-Induced Contamination: Experimental Testing and Computational Analysis," *SPIE*.

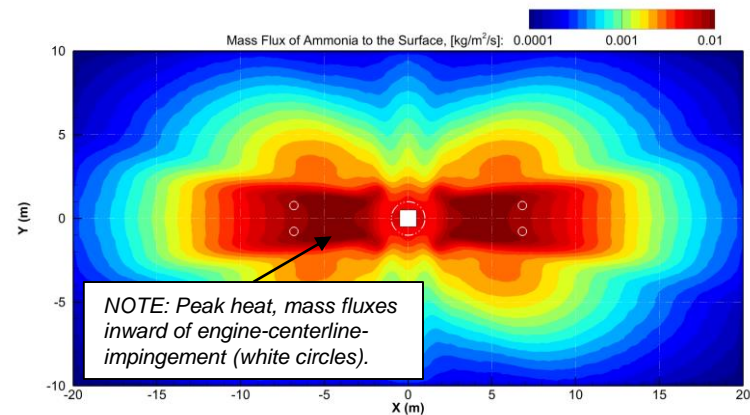
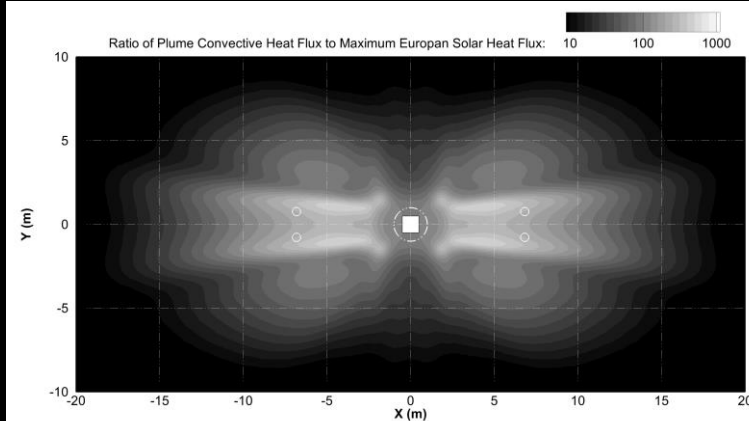
## [25 m] Europa Lander Example: Surface heating, NH<sub>3</sub> fluxes during bridle deployment.



Hoey, W., et al. (2020),  
"Europa Lander Engine  
Plume Interactions with the  
Surface and Vehicle," *IEEE*.



## [10 m] Europa Lander Example: Surface heating, NH<sub>3</sub> fluxes at lander touchdown.



Pre-Decisional Information: For Planning and Discussion Purposes Only

# [4] Toward Engineering Models for Lunar Landings

<i>Mission</i>	Future Lunar Landers
<b>Mission Type</b>	Landed sampling platforms, crewed vehicles, rovers
<b>Transport Vector</b>	<b>Landing engine plume flows</b>
<b>Ex. Vehicle Sensitivities</b>	<p>Landing site alteration</p> <p>Sampling site contamination</p> <p>Instrument / radiator / solar array interference from deposited particulate</p> <p>Vehicle mechanical damage by high-speed plume ejecta</p>
<b>Ex. Engineering Models</b>	Hybrid CFD-DSMC; empirical regolith viscous erosion models; particle adhesion and transport models...

*Just a few examples – there are many more engineering needs!*



Buzz Aldrin, the **Apollo 11** lunar module. Image credit: NASA/Neil Armstrong.

Future lunar landers and payloads will experience plume-induced effects during landing including lunar regolith erosion and transport, as did the **NASA Apollo landers.**

- JPL CC has developed engineering models incorporating CFD/DSMC, empirical treatments for viscous erosion, and particle transport in collaborations with commercial lunar landing service providers through the NASA HLS and CLPS programs.

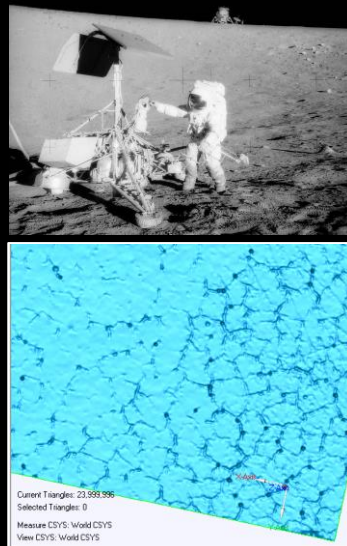
Hoey, W., et al. (2022), "Spacecraft Engine Plumes in Near-Vacuum: Earth's Moon and Beyond," *RGD32*.

Hoey, W., et al. (2023), "Analyses of Blue Origin Blue Moon Lunar Landing Descent Engine Plume Effects," *ICES*.

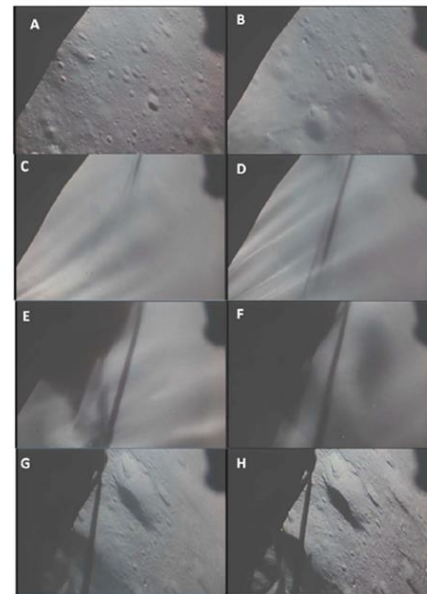
# Lunar Landings and Plume-Surface Interactions

- Apollo observations confirmed that **lunar regolith can cause severe operational impacts** to landing systems and cargo, especially when mobilized within high-speed engine plume flows ( $> 1$  km/s).
  - *E.g. Apollo 12 landing induced a 'sand-blasting' of exposed surfaces on the Surveyor 3 probe (at left).*

• Per NASA astronaut Gene Cernan in the Apollo 17 Technical Debriefing:  
*"I think dust is probably one of our greatest inhibitors to a nominal operation on the Moon. I think we can overcome other physiological or physical or mechanical problems except dust."*



**Plume-motivated dust impingement:** Pitting and cracking of a Lunar Surveyor III coupon visible on laser scan. **Figures from Immer et al. 2011a,b.**



**Figure 2.** Data Acquisition Camera views for Apollo 15, showing the stages of plume/soil interaction: (a) before incipient erosion, (b) smooth flow stage, (c and d) streaking stage, showing increasing structure in the streaks, (e and f) terrain modification stage, showing opaque masses of blowing soil, (g) clearing stage, and (h) after clearing has completed, showing increased contrast and resolution of shadow edges.

Chart from Metzger et al. 2011.

# JPL Engineering Model Framework

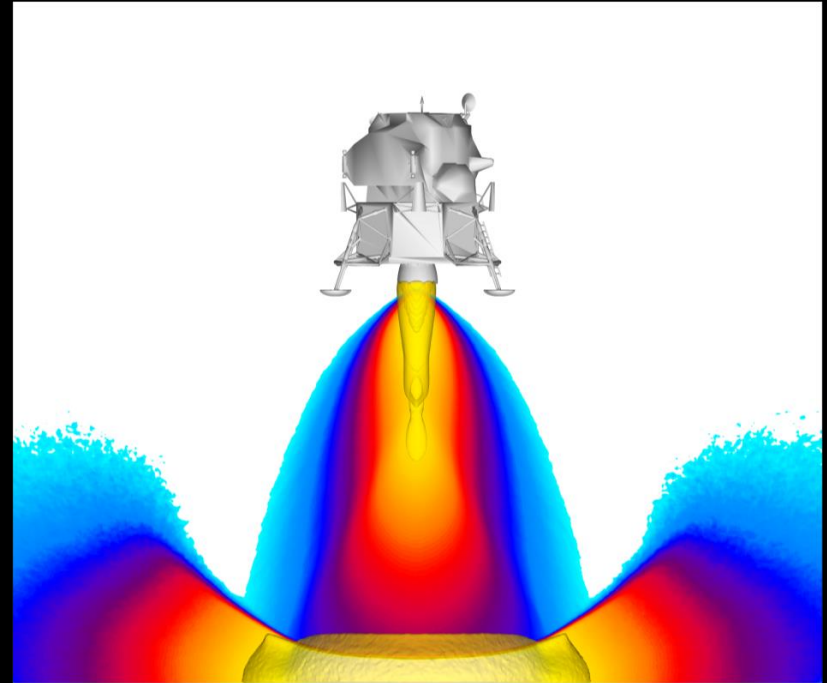
In support of NASA HLS and CLPS programs, JPL has developed and applied **physics-based engineering models for engine plume flow analysis**, linking:

- *A hybrid CFD / DSMC approach for modeling high-speed gas plume flows into vacuum, and*
- *surface erosion and particle tracing models.*

Relevant lunar landing applications include:

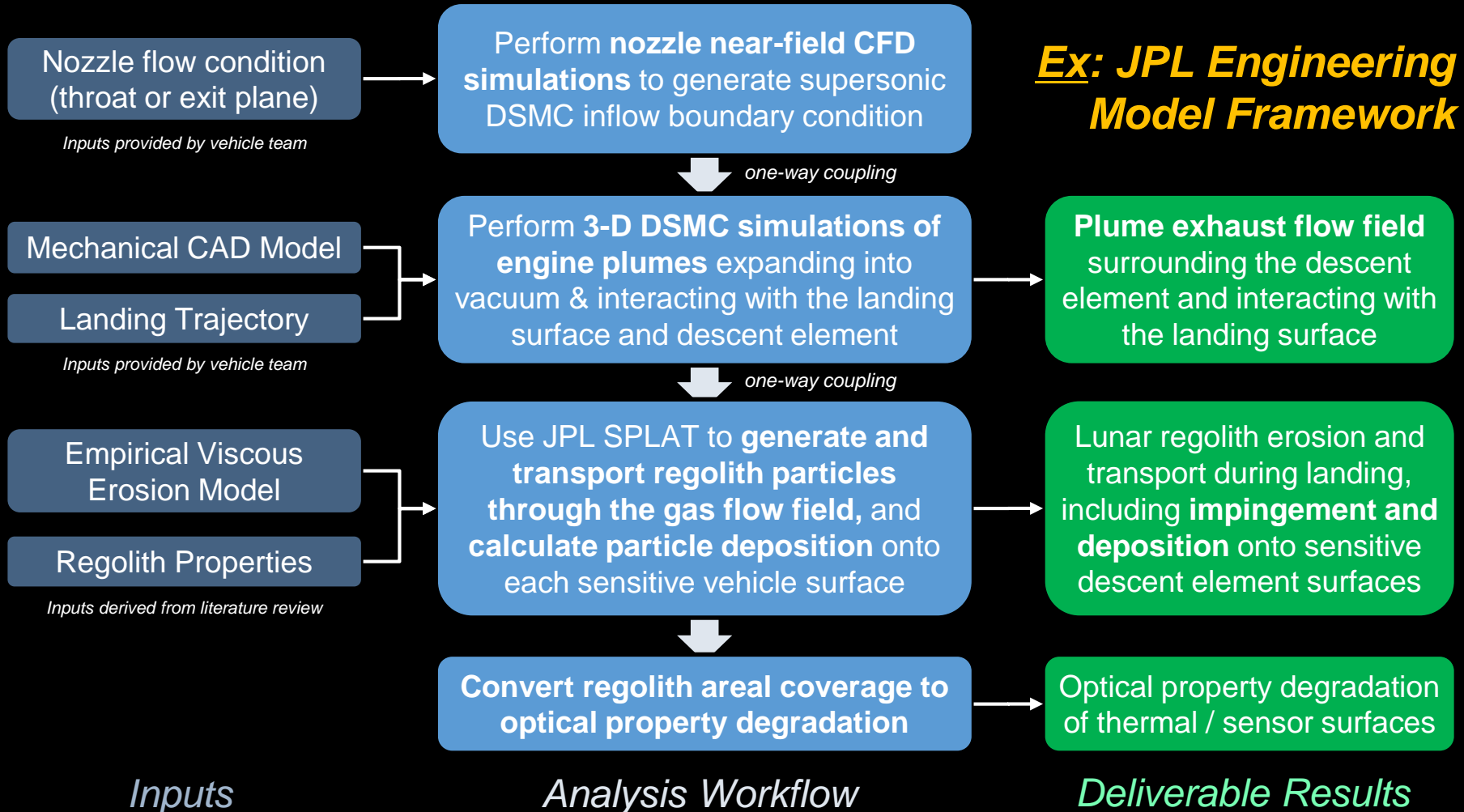
- *Removal and transport of dust and regolith from the lunar surface by impinging plumes*
- *Dust / regolith flux to lander sensitive surfaces to enable degradation assessments, e.g. of :*
  - *obscuration of cameras and optical sensors required for landing / docking*
  - *degradation of active radiator surfaces*

Hoey, W., et al. (2022), "Spacecraft Engine Plumes in Near-Vacuum: Earth's Moon and Beyond," *RGD32*.



**JPL 353D results for rarefied gas dynamic dual engine plume flows in lunar landing, representative contours of pressure on an Apollo DE.** Note shock formation between engines and surface, free expansion elsewhere. CFD-DSMC 1-way coupling.

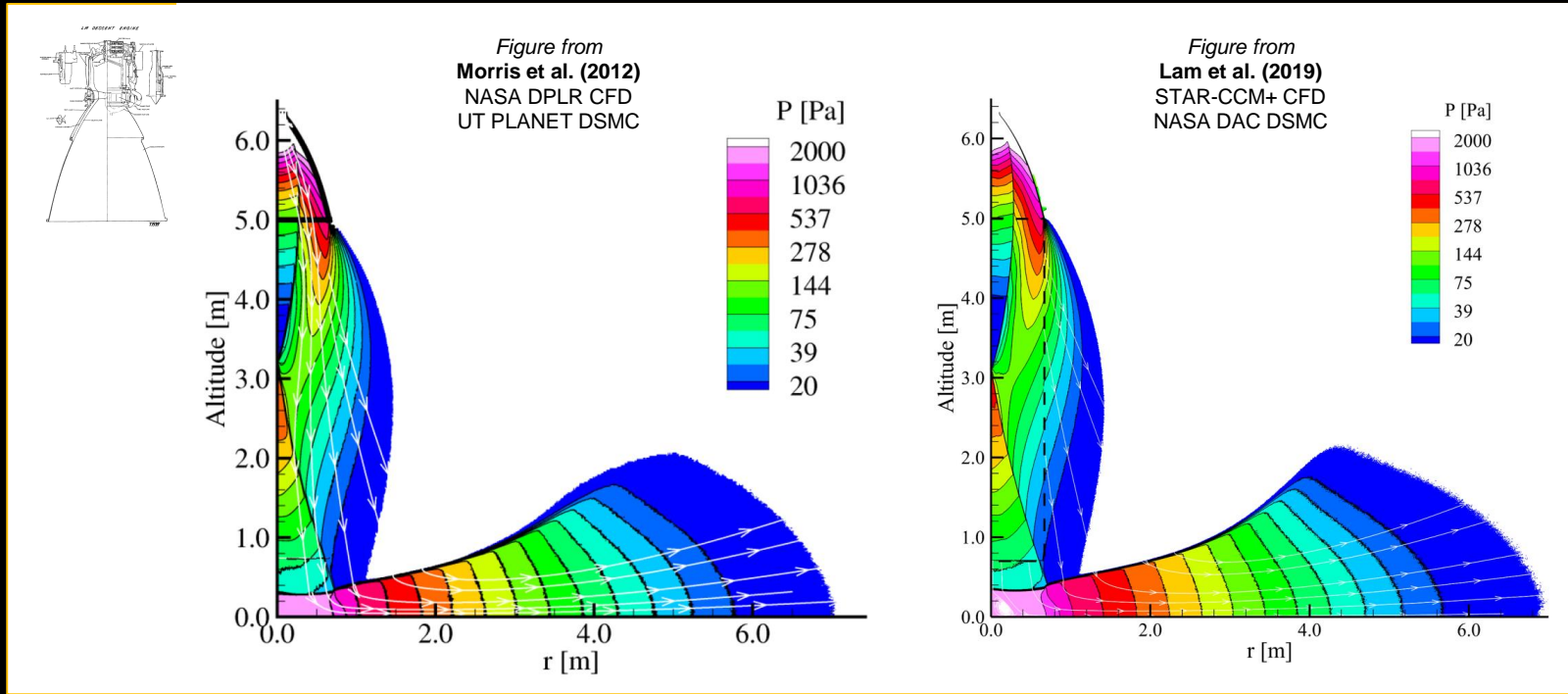
# *Ex: JPL Engineering Model Framework*







# Simulation example: Apollo Lunar Module Descent Engine (LMDE)



**Example 2-D result** – one-way coupled CFD-DSMC approaches for Apollo LMDE at 5m.

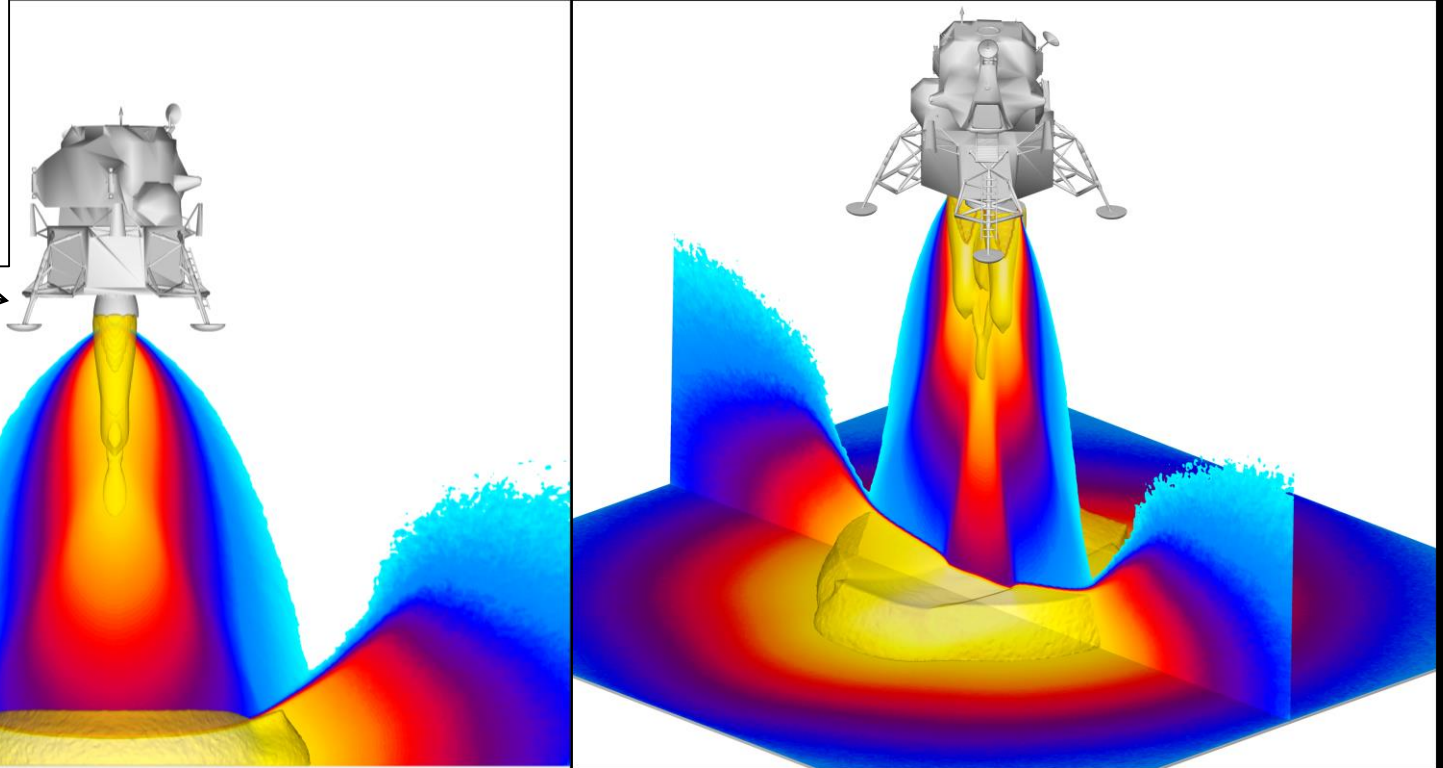
- See a JPL approach in Lam et al. (2019), compared to A. Morris et al. (2012, 2015a,b).

Lam, R., et al. (2019), "Numerical Study of Lander Engine Plume Impingement on the Surface of Europa," JANNAP.

## Simulation example: Apollo Landing

Engineering gas plume models must contain 3-D vehicle and surface geometries and must deliver e.g. surface pressures, species number fluxes, and heat fluxes in addition to gas flow field information.

**Example questions:**  
pressure loads on MLI?  
Heating on footpads?



**Example 3-D results including Apollo DE geometric models. Theoretical multi-engine configuration.**

Hoey, W., et al. (2022), "Spacecraft Engine Plumes in Near-Vacuum: Earth's Moon and Beyond," RGD32.

## [5] Conclusions: Existing Models and Applications

- **Spacecraft alter their environments**, and may compromise their engineering or science objectives through the nominal action of their propulsion systems.
  - *This is never more true than during landings!*
- Engineering models for engine plumes – in free-expansion and in plume-plume, plume-vehicle, plume-surface interactions – are **needed** for future missions.
  - *Spacecraft designs can be directly informed by such models in order to mitigate threats of contamination, heating, chemical or mechanical erosion, etc.*
  - *High-level models can be informed by available on-orbit data, terrestrial vacuum chamber testing campaigns and detailed physics-based simulations.*
- **Established tools exist** for some gas-dynamic problems in engineering:
  - *Empirical tools exist with well-defined uses and limits (i.e. ISS bipropellant models).*
  - *These tools can be extended to study effects beyond the immediate landing environment and vehicle, i.e. the transport of organic plume effluents, regolith and other contaminants to scientific sampling sites far away from a lander!*

# [6] Discussing New Models: An ‘Organic Footprint’

## *A High-Level Model for the Organic Footprint of Lunar Landing Vehicles:*

### *“How far does the footprint of a lunar landing vehicle extend?”*

- As discussed throughout this section of the workshop, landed spacecraft generate complex contamination environments and release organic material through processes including:
  1. *the operation of descent propulsion systems;*
  2. *venting processes, which are of particular importance for crewed missions; and*
  3. *materials outgassing.*
- In the low-gravity, near-vacuum lunar environment, **released contaminant material can travel great distances, and can permanently deposit in sufficiently cold sites including permanently shadowed regions (PSRs) of scientific interest.**
- This contamination environment generated by lunar landing vehicles can be characterized by further developing suites of physics-based modeling tools, including those in use at JPL.
  - *We already study the immediate vicinity of the vehicle, but we can extend this study over the horizon to understand vehicle effects on distant sites of scientific interest (e.g. PSRs).*

## [6] Discussing New Models: An ‘Organic Footprint’

What would it take to develop a high-level model for order-of-magnitude estimation of landed vehicle organic material generation, transport, loss, and deposition across the Moon that makes few specific assumptions about vehicle architecture and the local lunar environment?

1. **Source terms:** Study and develop a high-level inventory of **specific species** of organic contaminant likely to be released by landing vehicles, including:
  - a survey of common materials used on such vehicles and their available outgassing characterizations, &
  - a survey of common propulsion systems used on such vehicles and their primary plume byproducts;
2. **Loss terms:** Study and develop high-level models for loss processes relevant to relevant species of organic contaminant, including:
  - photodissociation and ionization;
  - gravitational escape (loss to space); and
  - adsorption / desorption onto the lunar surface and permanent deposition into cold traps.
3. **Transport:** Develop a **probabilistic free molecular transport model** for organic molecules from release and their first contact with the lunar surface until their loss, and compare and report on each generation and loss process (i.e. which are driving, and for which class of vehicle?)
  - The key question this model would answer: *Over what distances could certain specific organic molecules travel, and what proportion of these might be expected to reach permanently shadowed regions (PSRs) at defined distances away from a landing site?*

# Acknowledgements

This work was performed at the Jet Propulsion Laboratory, California Institute of Technology, under a contract with the National Aeronautics and Space Administration. High Performance Computing (HPC) resources used in this investigation were provided by funding from the JPL Information and Technology Solutions Directorate.

**© 2024 California Institute of Technology. Government sponsorship acknowledged.**



# Selected References [1 / 3]

1. Immer, C., Metzger, P., Hintze, P., Nick, A., Horan, R., "Apollo 12 Lunar Module exhaust plume impingement on Lunar Surveyor III," *Icarus*, Vol. 211, No. 2, 2011, pp. 1089-1102. <https://doi.org/10.1016/j.icarus.2010.11.013>
2. Morris, A.B. "Simulation of Rocket Plume Impingement and Dust Dispersal on the Lunar Surface," Ph.D. Dissertation, Dept. of Aerospace Engineering and Engineering Mechanics, Univ. Texas at Austin, Austin, TX, 2012.
3. Rahimi, A., Ejtehadi, O., Lee, K.H., Myong, R.S., "Near-field plume-surface interaction and regolith erosion and dispersal during the lunar landing," *Acta Astronautica*, Vol. 175, 2020, pp. 308-326. <https://doi.org/10.1016/j.actaastro.2020.05.042>
4. Watkins, R., et al., "Understanding and Mitigating Plume Effects During Powered Descents on the Moon and Mars," 2021, *Planetary Science and Astrobiology Decadal Survey 2023-2032 Whitepaper #089*. <https://doi.org/10.48550/arXiv.2102.12312>
5. Morris, A.B., Goldstein, D.B., Varghese, P.L., Trafton, L.M. "Approach for Modeling Rocket Plume Impingement and Dust Dispersal on the Moon," *AIAA Journal of Spacecraft and Rockets*, Vol. 52, No. 2., 2015. <https://doi.org/10.2514/1.A33058>
6. Lam, R.L., Maghsoudi, E., Hoey, W.A., "Numerical Study of Lander Engine Plume Impingement on the surface of Europa," *Proceedings of the 37<sup>th</sup> Joint Army Navy NASA Air Force (JANNAF) Exhaust Plume and Signatures Meeting*, JANNAF, Dayton, OH, 2019. <https://doi.org/2014/46431>
7. Hoey, W.A., Lam, R.L., Wong, A.T., Soares, C.E., "Europa Lander Engine Plume Interactions with the Surface and Vehicle," *Proceedings of the IEEE Aerospace Conference*, IEEE, Big Sky, MT, 2020. <https://doi.org/10.1109/AERO47225.2020.9172679>
8. Prem, P., Hurley, D.M., Goldstein, D.B., Varghese, P.L., "The Evolution of a Spacecraft-Generated Lunar Exosphere," *J. Geophysical Research: Planets*, 2020. <https://doi.org/10.1029/2020je006464>
9. Zhang, H., et al., "The Investigation of Plume-Regolith Interaction and Dust Dispersal during Chang'E-5 Descent Stage," *Aerospace*, Vol. 9, No. 7., 2022. <https://doi.org/10.3390/aerospace9070358>
10. Grabe, M., Soares, C.E., "Status and Future of Research on Plume Induced Contamination," *Proceedings of the 70<sup>th</sup> International Astronautical Congress*, IAF, Washington, D.C., 2019.
11. Gaier, J.R., "The Effects of Lunar Dust on EVA Systems During the Apollo Missions," NASA TM-2005-2013610/REV1, Cleveland, OH, Apr. 2007.
12. *Analysis of Surveyor 3 Material and Photographs Returned by Apollo 12*, NASA SP-284, Washington, D.C., Jan. 1972.



## Selected References [2 / 3]

13. Bird, G.A., *Molecular Gas Dynamics and the Direct Simulation of Gas Flows*, Oxford Univ. Press, New York, NY, 1994.
14. LeBeau, G.J., "A Parallel Implementation of the Direct Simulation Monte Carlo Method," *Computer Methods in Applied Mechanics and Engineering*, Vol. 174, Nos. 3-4, 1999, pp. 319-337. [https://doi.org/10.1016/S0045-7825\(98\)00302-8](https://doi.org/10.1016/S0045-7825(98)00302-8)
15. Lumpkin, F.E., Marichalar, J.J., Stewart, B.D., "High-Fidelity Simulations of Plume Impingement to the International Space Station," *Proceedings of the 33<sup>rd</sup> Joint Army Navy NASA Air Force (JANNAF) Exhaust Plume and Signatures Meeting*, JANNAF, Monterey, CA, 2012.
16. Mehta, M., Sengupta, A., Renno, N.O., Van Norman, J.W., Huseman, P.G., Gulick, D.S., Pokora, M., "Thruster Plume Surface Interactions: Applications for Spacecraft Landings on Planetary Bodies," *AIAA Journal*, Vol. 51, No. 12, 2013, pp. 2800-2818. <https://doi.org/10.2514/1.J052408>
17. Roberts, L., "The Action of a Hypersonic Jet on a Dust Layer," *31<sup>st</sup> Annual Meeting of the Institute of Aerospace Sciences*, IAS, Paper 63-50, New York, NY, Jan. 1963.
18. Metzger, P.T., et al., "Scaling of Erosion Rate in Subsonic Jet Experiments and Apollo Lunar Module Landings," *12th Biennial International Conference on Engineering, Construction, and Operations in Challenging Environments, Earth and Space 2010*, American Society of Civil Engineers, Honolulu, HI, Mar. 2010. [https://doi.org/10.1061/41096\(366\)21](https://doi.org/10.1061/41096(366)21)
19. Metzger, P.T., Lane, J.E., Immer, C.D., "Modification of Roberts' Theory for Rocket Exhaust Plumes Eroding Lunar Soil," *11<sup>th</sup> ASCE Aerospace Division International Conference, Earth and Space 2008*, American Society of Civil Engineers, Long Beach, CA, Mar. 2008. <https://doi.org/10.48550/arxiv.2104.05198>
20. Brieda, L., "Numerical Model for Molecular and Particulate Contamination Transport," *Journal of Spacecraft and Rockets*, Vol. 56, No. 2, 2018. <https://doi.org/10.2514/1.A34158>
21. Anderson, J.R., Hoey, W.A., Alred, J.M., Soares, C.E., Brieda, L., "Space Launch Vehicle Transient Particle Redistribution Modeling and Implications for Optically Sensitive Payloads," *Systems Contamination: Prediction, Control and Performance*, SPIE, vol. 11489, Aug. 2020. <https://doi.org/10.1117/12.2567765>
22. Heiken, G.H., Vaniman, D.T., French, B.M., *Lunar Sourcebook, A User's Guide to the Moon*, Cambridge Univ. Press, 1991.
23. Colwell, J.E., Batiste, S., Horanyi, M., Robertson, S., Sture, S., "Lunar Surface: Dust Dynamics and Regolith Mechanics," *Reviews of Geophysics*, Vol. 45, No. 2, 2007. <https://doi.org/10.1029/2005RG000184>

# Selected References [3 / 3]

24. Gaier, J.R., Ellis, S., Hanks, N., “Thermal Optical Properties of Lunar Dust Simulants,” *Journal of Thermophysics and Heat Transfer*, Vol. 26, No. 4, 2012. <https://doi.org/10.2514/1.T3838>
25. *SLS-SPEC-159, Cross-Program Design Specification for Natural Environments (DSNE)*, Rev. I, NASA, Oct. 2021.
26. Morris, A.B., Goldstein, D.B., Varghese, P.L., Trafton, L.M. “Lunar Dust Transport Resulting from Single- and Four-Engine Plume Impingement,” *AIAA Journal*, Vol. 54, No. 4, 2015. <https://doi.org/10.2514/1.J054532>
27. Hoey, W.A., Trafton, L.M., Ackley, P.C., Goldstein, D.B., Varghese, P.L., “Variations in the Canopy Shock Structures of Massive Extraterrestrial Plumes: Parametric DSMC Simulation of 2007 Tvashtar Observations,” *Icarus*, Vol. 363, No. 114431, 2021. <https://doi.org/10.1016/j.icarus.2021.114431>
28. *Product Cleanliness Levels – Applications, Requirements, and Determination*, Insitute of Environmental Sciences and Technology, IEST-STD-CC1246E, Feb. 2013.

## See also the JPL presentations from which this OPP talk has been derived:

- Lam, R., et al. (2019), “Numerical Study of Lander Engine Plume Impingement on the Surface of Europa,” *JANNAF*.
- Hoey, W., et al. (2020), “Europa Lander Engine Plume Interactions with the Surface and Vehicle,” *IEEE*.
- Hoey, W., et al. (2020), “Europa Lander Mission Concept Plume-Induced Contamination: Experimental Testing and Computational Analysis,” *SPIE*.
- Hoey, W., et al. (2022), “Spacecraft Engine Plumes in Near-Vacuum: Earth’s Moon and Beyond,” *RGD*
- Hoey, W., et al. (2022), “A Predictive Model of Lunar Gateway Molecular Contamination,” *ISMSE*.
- Hoey, W., et al. (2023), “Analyses of Blue Origin Blue Moon Lunar Landing Descent Engine Plume Effects,” *ICES*.

Contact the authors at < [william.a.hoey@jpl.nasa.gov](mailto:william.a.hoey@jpl.nasa.gov) >.



**Jet Propulsion Laboratory**  
California Institute of Technology

---

[jpl.nasa.gov](https://jpl.nasa.gov)